

Endless Single Vision

“Optimized for you and tailored to your lifestyle to guarantee impeccable visual quality”

Endless Single Vision lenses were designed for the modern lifestyle. The visual quality, clarity, and comfort of these premium single vision lenses are impeccable.

This sophisticated lens has an optimization process that considers the wearer's accommodative ability to focus at different distances. The result is an effective lens that provides agile and precise vision.

The benefits →

Impeccable visual quality, especially for high prescriptions and wrapped frames

Comfortable and accurate focusing, at all distances

Near elimination of peripheral blur

Superior visual quality for viewing digital devices

Technologies →



Spatial
Vision



Eye Focus
Profile



Ray
Tracing



Fitting
Configuration

These principles underpin IOT's cutting-edge lens optimization technology, IOT Digital Ray-Path 2 Technology.



Easy to adapt. Easy to wear.

Proven wearer satisfaction →

100%

of wearers say they feel
VERY SATISFIED
with the lens performance

96%

of wearers say they have an
EXCELLENT VISUAL QUALITY
in distance, intermediate and near

96%

of wearers say they have an
EXCELLENT VISION
for the use of electronic devices



Spatial
Vision

Use of accommodation for improved spatial vision and super dynamic vision.

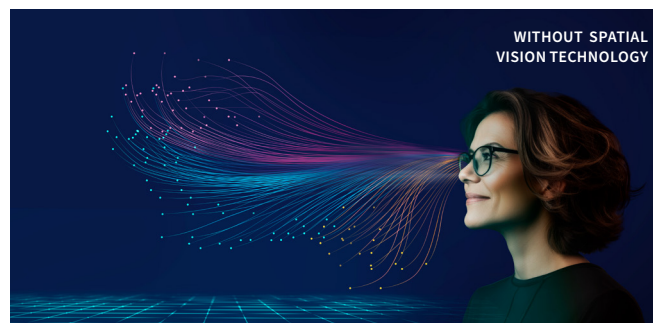
“ Naturally good vision, even when you’re on the move”

Spatial Vision Technology optimizes the range within which an object can be moved closer to or farther away from the eye without a noticeable change in the focus of the image. This improves the eye’s ability to focus on objects both near and far, resulting in **exceptional sharpness perception and extended areas of focus.**

This technology ensures that wearers experience clear and sharp vision, even in dynamic environments where objects are constantly changing distances from the eye. It enables **smooth and rapid transitions across visual zones**, especially when looking down to focus on nearby objects.

99.5%

of gaze directions are now optimized, taking into account the wearer’s accommodation capacity



It enhances your spatial vision, providing an extended areas of clear focus.



Eye Focus
Profile

Ege Focus profiling for flawless vision.

“ Flawless vision from any angle”

Eye Focus Profile Technology maximizes the clear viewing area and significantly reduces perceived blur in the peripheral areas of the lens.

By taking into consideration the wearer’s accommodative reserve, it effectively minimizes oblique aberrations, achieving an absolute reduction in defocus and increasing the visual performance of the lenses.



Ray
Tracing

Optimum vision across the entire lens.

“ Stay ready at all times, so nothing can hold you back”

Thanks to point-by-point optimization over the entire lens surface, **Ray Tracing Technology provides precise vision at every distance and in every direction of gaze.** The perceived power distribution is consistent, regardless of prescription or frame shape. Wearers enjoy a **more natural visual experience with much less distortion** than a conventional digital lens.





Fitting
Configuration

Fitting Configuration.

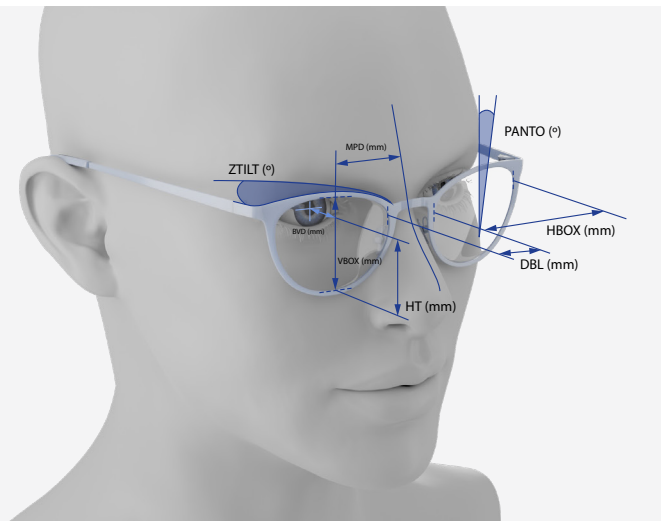
“ Fitted perfectly to you”

→ Individual Fit

Personalized to perfection.

“ Individual and one-of-a kind,
just like you”

Optimizes the vision zones based on the unique data of the wearer, including their prescription, facial morphology, frame shape, and use position. This allows us to create a fully personalized lens.



→ Frame Fit

Adaptation in next to no time.

“ Your style, your choice”

Regardless of the shape or size of the frame, our technology adjusts the lens design structure to provide optimal performance.



→ Lens Fit

Unbeatable combination of aesthetics and lightness.

“ A flat lens design, for a natural look”

Our technology provides a sleek and modern aesthetic for the wearer, even with a high prescription. This is done through utilizing the optimal base curves and thickness optimization.



Measurement information →

Providing personal measurements ensures the best possible lens performance to meet the unique requirements of your patients.

Even when personal measurements are not supplied, the patient will benefit from application of standard default measurements.

Prescription**Physiological position of wear data**

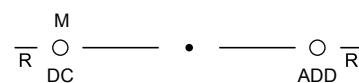
- Monocular pupillary distance
- Fitting height
- Wrap tilt (default 5°)
- Back vertex distance (default 14 mm)
- Pantoscopic angle (default 8°)

Frame data

Unbeatable combination of aesthetics and lightness. Regardless of the frame, our technology adjusts the lens design to provide optimal performance.

- A - Lens Width (Eye Size)
- B - Lens Height
- ED - Effective Diameter
- DBL - Bridge Size

* Keep a minimum of 8 mm between the fitting cross and the top of the frame to ensure the wearer receives maximum benefit from the night vision zone.

Technical information →→ **Engraving Index**

M = Material DC = Design Code ADD = Addition Power

Product	Design Code
Endless Single Vision	El