

Endless Steady Progressive

“ Optimized to ensure the best natural vision and impeccable visual quality for you”

Endless Steady Progressive lenses revolutionize the current concept of personalization in a more sophisticated and effective way. The optimization process also considers the wearer's accommodative ability to focus, at different distances.

The benefits →

Precise and comfortable focus for all working distances in any direction of gaze

Near elimination of peripheral blur

Superior visual quality for viewing digital devices

Higher image stability for reduced swim effect

Improvement of peripheral visual acuity in the distance zone

Technologies →



Spatial Vision



Eye Focus Profile



Ray Tracing



Visual Stability



Lifestyle



Fitting Configuration

These principles underpin IOT's cutting-edge lens optimization technologies, IOT Digital Ray-Path 2 Technology and Steady Methodology.



Standard configuration →

Type	All-Purpose Progressive
Minimum Fitting Heights	Manual or automatic variable MFH (from 14 to 18 mm in steps of 1 mm)
Near Zone Inset	Manual or automatic variable inset (from 0 to 4 mm in steps of 0.5 mm)
ADD	1.00 - 4.50D in steps of 0.25D

Spatial
Vision

Use of accommodation for improved spatial vision and super dynamic vision.

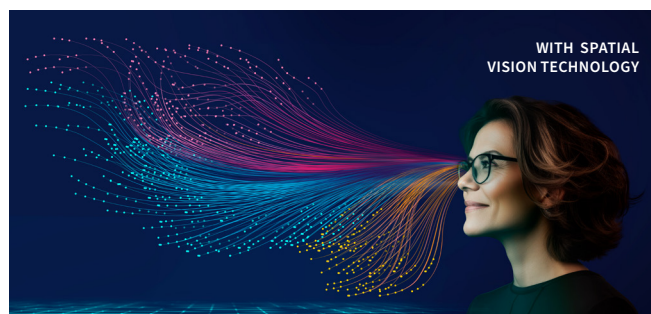
“ Naturally good vision, even when you're on the move ”

Spatial Vision Technology optimizes the range within which an object can be moved closer to or farther away from the eye without a noticeable change in the focus of the image. This improves the eye's ability to focus on objects both near and far, resulting in **exceptional sharpness perception and extended areas of focus**.

This technology ensures that wearers experience clear and sharp vision, even in dynamic environments where objects are constantly changing distances from the eye. It enables **smooth and rapid transitions across visual zones**, especially when looking down to focus on nearby objects.

99.5%

of gaze directions are now optimized, taking into account the wearer's accommodation capacity

WITHOUT SPATIAL
VISION TECHNOLOGYWITH SPATIAL
VISION TECHNOLOGY

It enhances your spatial vision, providing extended areas of clear focus.

Eye Focus
Profile

Eye Focus profiling for flawless vision.

“ Flawless vision from any angle ”

Eye Focus Profile Technology maximizes the clear viewing area and significantly reduces perceived blur in the peripheral areas of the lens.

By taking into consideration the wearer's accommodative reserve, it effectively minimizes oblique aberrations, achieving an absolute reduction in defocus and increasing the visual performance of the lenses.

Ray
Tracing

Optimum vision across the entire lens.

“ Say goodbye to head tilting in search of the exact spot – regardless of distance and direction of gaze ”

Thanks to point-by-point optimization over the entire lens surface, **Ray Tracing Technology provides precise vision at every distance and in every direction of gaze**. The perceived power distribution is consistent, regardless of prescription or frame shape. Wearers enjoy a **more natural visual experience with much less distortion** than a conventional digital lens.

Visual
Stability

Attain perfect vision stability, always.

“ Exuding confidence while on the move ”

Visual Stability Technology **significantly reduces the swim effect when moving** by controlling the mean power error.

This virtually eliminates image distortions and enhances image stability, providing the wearer with a **comfortable and clear vision experience**.





Lifestyle

Fitted perfectly to each wearer's lifestyle.

“Your lifestyle is unique, just like you”

Lifestyle Technology adapts to the **changing vision needs of wearers at every stage of their lives and lifestyles.**

The lens suits the wearer's daily activities with a choice of one of the **four custom-designed options** with a unique power distribution that enhances visual areas for balance, distance, intermediate or near activities.

Choosing the best custom design based on your patient's lifestyle ensures they receive an all-purpose lens tailored for maximum satisfaction and visual comfort.



Endless Steady Progressive | Balance Vision

A versatile lens design, which balances distance, near and intermediate fields. Designed for active and demanding presbyopes, whether experienced or new progressive lens wearers.



Endless Steady Progressive | Near Vision

Option with wider near zone, ideal for reading, crafting or other activities that involve focusing on objects close at hand. Suitable for experienced or new progressive lens wearers.



Endless Steady Progressive | Distance Vision

Option with panoramic distance zone, ideal for active and outdoor lifestyles. Suitable for experienced or new progressive lens wearers.



Endless Steady Progressive | Intermediate Vision First-time presbyopes

A softer progressive design option with a wider intermediate zone, ideal for new presbyopes or wearers who have experienced difficulties with other progressive lenses.



Fitting
Configuration

Fitting Configuration.

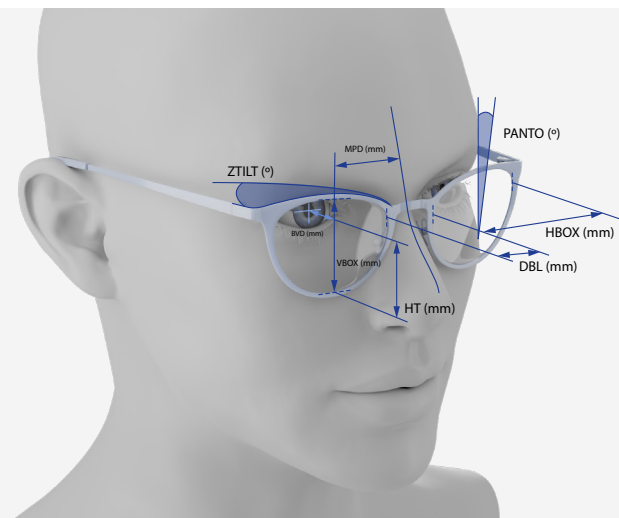
“ Fitted perfectly to you”

→ Individual Fit

Personalized to perfection.

“ Individual and one-of-a kind,
just like you”

Optimizes the vision zones based on the unique data of the wearer, including their prescription, facial morphology, frame shape, and use position. This allows us to create a fully personalized lens.



→ Frame Fit

Adaptation in next to no time.

“ Your style, your choice”

Regardless of the shape or size of the frame, our technology adjusts the lens design structure to provide optimal performance.



→ Lens Fit

Unbeatable combination of aesthetics and lightness.

“ A flat lens design, for a natural look”

Optimizes the aesthetic appearance of the lens by utilizing the optimal base curves and thinning prism, resulting in the thinnest possible lenses, even with a high prescription. Through thickness optimization, our technology provides a sleek and modern aesthetic for the wearer.



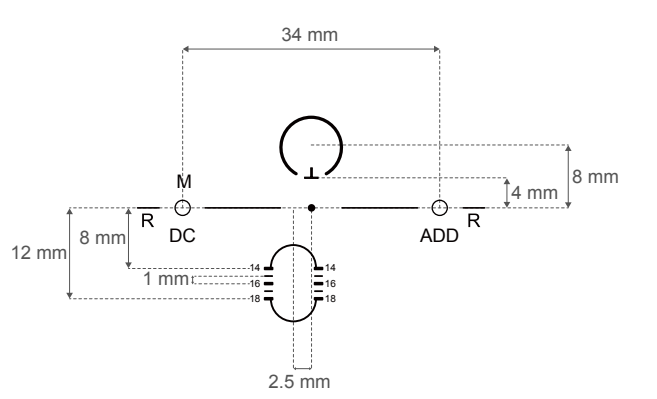
Measurement information →

Providing personal measurements ensures the best possible lens performance to meet the unique requirements of your patients.

Even when personal measurements are not supplied, the patient will benefit from application of standard default measurements.

Prescription
Physiological position of wear data
<ul style="list-style-type: none">Monocular pupillary distanceFitting heightWrap tilt (default 5°)Back vertex distance (default 14 mm)Pantoscopic angle (default 12°)
Lifestyle and individual preferences
<ul style="list-style-type: none">Lens design (balance, distance, near or intermediate)Near working distance (default 40 cm)
Frame data
Unbeatable combination of aesthetics and lightness. Regardless of the frame, our technology adjusts the lens design to provide optimal performance.
<ul style="list-style-type: none">A – Lens Width (Eye Size)B – Lens HeightED - Effective DiameterDBL - Bridge Size

Technical information →



→ Engraving Index

M = Material DC = Design Code ADD = Addition Power

Product	Design Code
Endless Steady Balance	ES
Endless Steady Distance	ESd
Endless Intermediate	ESi
Endless Near	ESn